

<http://www.alientechsales.co.uk>

<http://www.quantumtuning.co.uk>

## CONTENTS

<b>1.INTRODUCTION</b>	<b>2</b>
• Related services	
<b>2. SOFTWARE INSTALLATION</b>	<b>4</b>
• Operating system requirements	
• Installing procedure	
• Connecting the Pc to KESSV2	
<b>3. CONNECTION TO THE VEHICLE</b>	
<b>4. SOFTWARE FUNCTIONS</b>	<b>7</b>
• Info	
• Options	
• Extras	
Screen of the functions	<b>10</b>
• ID	
• Reading	
• Writing	
• Recovery	
• Specials	
Kind of Vehicles	<b>14</b>
• Car	
• Bike	
• Truck	
Disclaimer	<b>19</b>

## 1.INTRODUCTION

The Alientech OBDII Serial Programmer, with new categories of supported vehicles, grants the best operativeness in a single product. Now you can work on vehicles such as cars, motorcycles and trucks. KESSV2 can interface your PC with the ECU. It is possible to safely process the data, without any communication interference, by using dedicated lines such as K, CanBus and J1850.



### Related services

Buying KESSV2 you do not only get a serial programmer of new generation, but you can also enjoy a range of essential additional services. Technical Assistance is certainly Alientech strong point: we have a highly efficient technical team that can meet all customer requirements thanks to the experience gained in years. Requests may be made by mail or by phone, every step followed with great care and attention. With the management software it is possible to solve any possible doubt about procedures and hardware environment. Moreover the latest version of the software and the communication protocols for the newest vehicles will be always available with online updates. The related services are available taking out a subscription.

## 2.SOFTWARE INSTALLATION

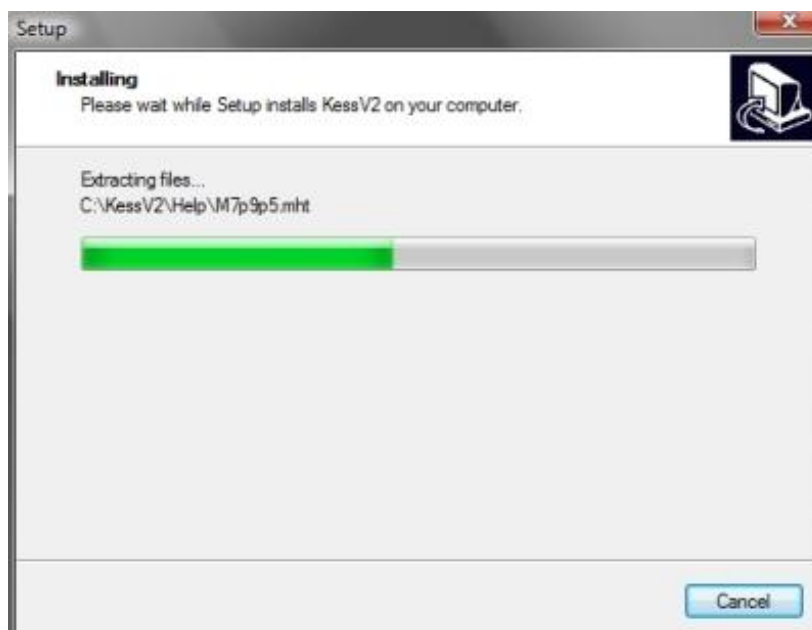
You can download KESSV2 software for free from the download section of our website [www.alientech.to](http://www.alientech.to). Once saved the file in your Pc, just double click on the icon and install the software.

### Operating system requirements

- Windows XP or later.
- Ram 512 Mb.
- CPU Pentium III 800 Mhz.  
USB 1.0.
- Microsoft Framework.NET Upgrade (It is included in the update packages that can be downloaded online from Microsoft Windows).
- Connection to the Internet for the updates.

### Installing procedure

To avoid any kind of problem of incompatibility of the tool, before to start the installation you have to connect to the Internet and download software and firmware updates. When connecting the device to the PC, the operating system will require the Drivers. Manually perform the search and, when requested, insert the path C:\Kessv2\Driver. Once running, the software will create a new folder and will install the files on your PC.



## Connecting the Pc to KESSV2

Once the software has been installed, KESSV2 is ready to work: you just have to connect the device to the PC via USB and run the software.



The picture shows the updating process of the device, which will automatically start whenever a new version of the software is available online.

### **3.CONNECTION TO THE VEHICLE**

KESV2 has a wide range of wirings. All the wiring diagrams for the several cables will be available on the user's handbooks.

## 4.SOFTWARE FUNCTIONS

KESSV2 has a very simple and user-friendly software interface. With a few click you can read and write on the ECU the file you need, as the device will work in automatic.

Hereinafter more details about the peculiarities of the software.

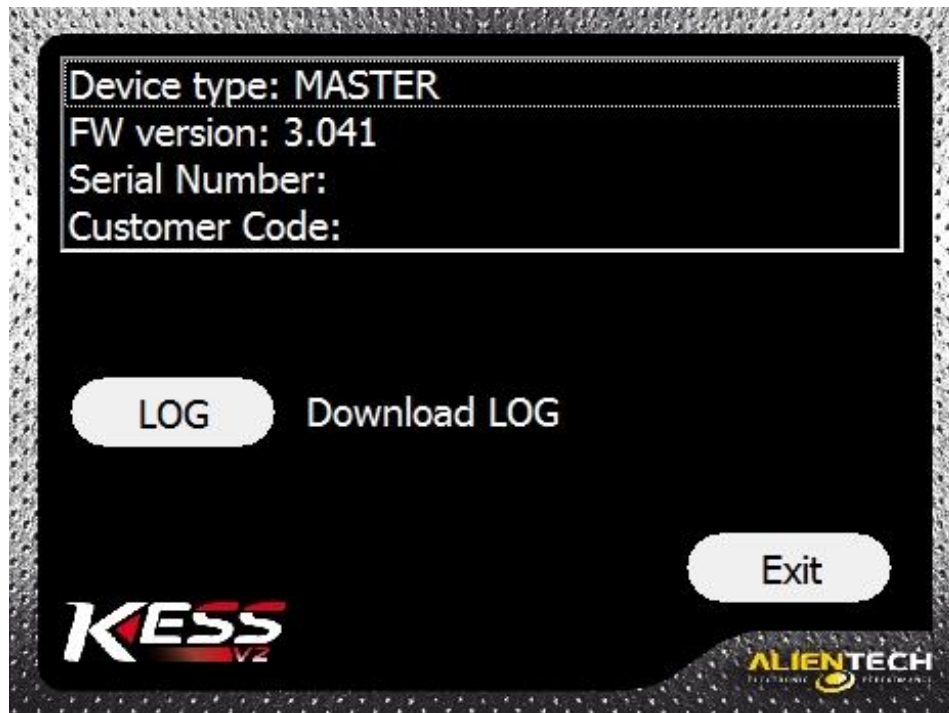


The main window shows the main functions of KESSV2. There are no special submenu to explore nor hidden features difficult to understand, as it may happen in many professional software. The above picture shows the main window at the startup. Four buttons to set few options and three icons to choose the operating mode. More info about the functions of the buttons in the main window as follow.

## Info

The “info” button allows you to display a range of data on the device and the customer. The following info will appear in order:

- Type of device: Master or Slave
- Firmware version installed on KESSV2
- Serial number of the device
- Customer Code



## Help

By clicking the “Help” button you will be able to directly open the KESSV2 user’s handbook in order to have a help always at your disposal.

## Log

The “log” file is nothing more than a file with a chronologic history of the operations that your device has executed. This file is very important in case technical assistance is needed, as gives the ability to trace the possible problem found, recreate it and finally solve it.



## Options

Select the language



## Extras

This button allows to open the menu to work in “bootloader” mode. You have to choose the type of ECU on which you need to work and then click “OK” to display the wiring diagrams to follow for a proper connection.



## SCREEN OF THE FUNCTIONS

The main window allows you to choose one among the three main categories of vehicle on which it is possible to work: cars, motorcycles, trucks.

Once you have chosen brand and model of the vehicle, a screen will be opened with the following functions:



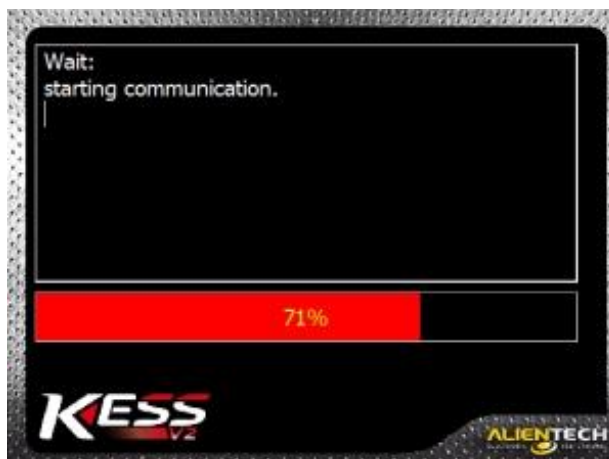
### ID

To get Hardware and Software numbers of the ECU.

### Reading

After you have chosen brand and model needed you can read the ECU.

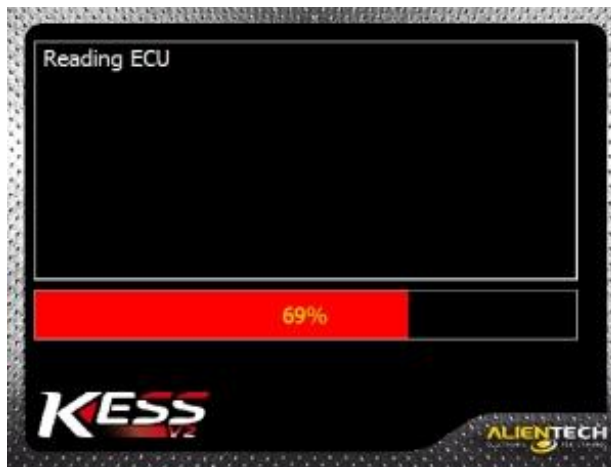
This process is split into three parts. In the first part the device communicates with the ECU.



In the second part all the useful data of the vehicle are displayed on the screen.



In the third part the actual reading takes place.

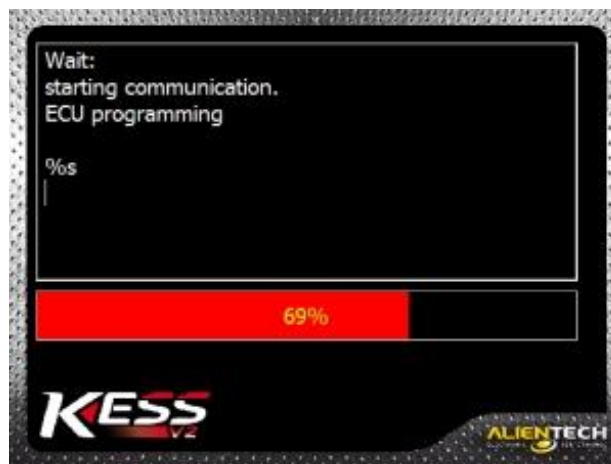


## Writing

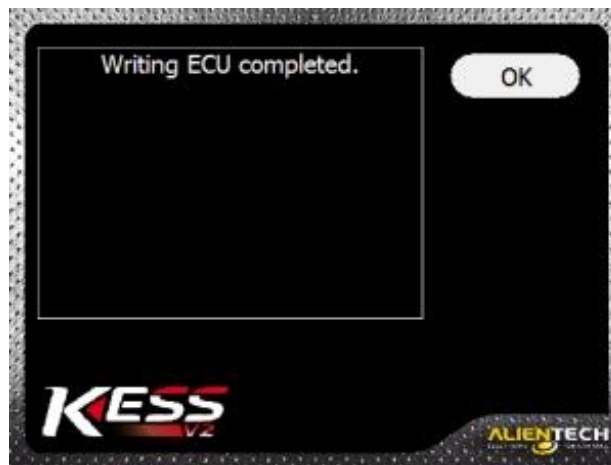
Also this procedure is split in three parts. Once you have chosen the file that you want to upload in the ECU, the device will allow you to choose how to write the file, “totally” or “partially” (this parameter varies according to the ECU: it is not always possible to choose between the two options)



The following part is the communication with the ECU.



In the end, the actual writing.



### **Recovery**

This function allows you to upload the desired file in the ECU, even if the programming is accidentally interrupted.

### **Specials**

#### **Pull Up**

Pull Up Resistor (a resistor connected in order to avoid any unwanted voltage variations), that can be set on the K-line only in a few specific cases.

#### **Speed writing**

Speed of the protocol communication used between the ECU and Kess.

## KIND OF VEHICLES

### Car



The window with every kind of vehicle displays: brand, model and the version of the ECU related to the engine equipped on the vehicle. On the right side there are three checkboxes that indicate what KESSV2 can do: Checksum (CHK), Reading (RD), Writing (WR).

### Bike



### Truck















## Disclaimer

All the material published on this manual is the result of a painstaking and careful work, subject to continuous and accurate controls of the data in updating, but some errors may occur beyond our control.

**Alientech S.r.l.** is not responsible for these errors in any case, even if any notification is highly appreciated.

We would like also remind you that all our researches are based on technical-scientific surveys, supported by the most advanced data processing systems; however this do not guarantee that in certain cases the device may malfunction.

In any case **Alientech S.r.l.** is not liable for damages of any kind (direct or indirect) that may be related to the device or to the contents of the manual.

**Alientech S.r.l.** reserves the right, should it be needed, to block, suspend or modify any of the services available, even for a single user, without previous communications and any justification.

The software that may be available for the “download” is free from viruses. **Alientech S.r.l.** cannot be responsible in any way for any damage caused to your vehicles, whether due to viruses, malfunctioning of the software, hardware incompatibility or other anomalies that may occur.

